

RxView™ and RxHighlight™ R5

One software for all formats!

RxView is a powerful multi-platform viewer, providing visualization capability to a wide range of 2D and 3D formats – without having to invest in the native software.

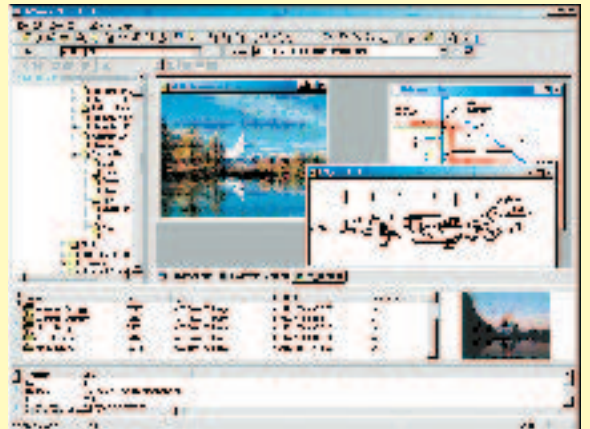
RxHighlight adds redlining, interactive collaboration and file conversion capabilities to the Viewer, allowing multiple users to share information more efficiently throughout the organization. RxHighlight improves the revision control, shortens the time used for engineering changes and improves the feedback process in the organization. Designed for network environments, with administrative tools, access control and control via external databases.

With the use of Rasterex' viewing technology, manufacturing, engineering, design and construction companies will realize huge cost savings and productivity gains.

RxView displays and prints more than 300 different file formats

- 2D and 3D CAD drawings and plot files
- Scanned raster files
- Image files (TIFF, GIF, JPEG etc.)
- Office formats (PDF, Word, Excel etc.)
- Hybrid formats
- Scanned large formats
- And many more...

See separate specification for all supported formats



RxHighlight adds Redlining, Collaboration and File Conversion

- Text, memos and notes
- Graphical objects, shapes and symbols
- User-defined comment colors
- Black-out comments
- Comment layer and user control
- Snapping function for measurement and dimensions
- Hyperlink



RxView™ and RxHighlight™ R5

One software for all formats!

A user friendly interface, enhanced with advanced functionality!

- View, layouts, blocks, layer, fonts, pen tables, xrefs etc.
- Fast zoom with slide control
- Fast page, pan and rotate
- File calibration and area measurement
- File overlay and compare
- Quick View Support
- Multiple file loading
- Multiple and split windows
- Multi page with thumbnails, preview, Bird's Eye, magnifying cursor, layer control, overlay/compare, watermark, stamps, header/footer, etc.



- A powerful printing and plotting engine allows RxView and RxHighlight to be used as a printing/plotting station in technical offices. All Windows based printers/plotters are supported.
- RxView and Rx Highlight are controlled through an extensive DDE interface. New functionality can be added via a PlugIn interface, and an extensive OLE automation allows full integration with other software environments.
- All files can be opened on local machines, in a network environment or via web.

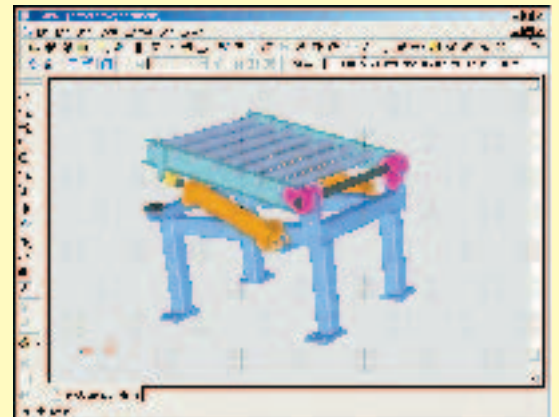
RxView supports the most common 3D formats

Supports major 3D CAD formats:

- CATIA, Pro/Engineering, SolidWorks ACIS/SAT, IGES, STEP, VDA-FS, STL Microstation etc.

Advanced functionality:

- Fast load, review, measure and rotate
- Real-time 3D rendering
- Advanced interactive cross-sectioning
- Assembly structure visualization
- 3D navigation and modeling tools



RxView™ Specifications

Raster Formats	CAL, MIL, G4, GP4, DCX, GTX - CCITT Group 3 & 4, RNL, TIFF all variants included tiled/untiled, Intel fax, Intergraph: CIT, RLE, TG4 all variants, RLC, RLC2, EDMICS TG4.
Vector Formats	Autodesk formats: DWG 2,5 – 2002, DWF, DXF 2,5 – 2002, RND, SLD. Other CAD formats: Anvil 1000, Microstation (v3,-8), HP ME 10/30, CadKey, CGM, Gerber, RxSpotlight (VC5). Plot formats: HPGL, HPGL2, CalComp 907/908. FelixCAD and Data Design system (*.VEC).
3D Vector Formats	Microstation, SolidWorks 3D, Stereolithograph Drawing (*.STL) Catia, IGES, ACIS, STEP, VRML, VDA, Pro/Engineer, SolidEdge and Inventor parts.
Hybrid formats	AutoCAD 14-2002, GTX RasterCAD, CADOverlay, MicroStation.
Color Image Formats	TIFF, PCX, GIF, Targa, Windows BMP, RLE, Windows metafile, OS2 – DIB, JPEG – all variants, SUN raster – RAS, PNG, Adobe Photoshop, Intergraph RGB.
Office Formats	MSWord 6.0/95-97/2000-XP, Acrobat PDF, TXT, HTML, PowerPoint 97/2000-XP, Excel 95-97-2000-XP, Binary.
View Functions	Zoom and pan with or without bird's eye view. Zoom +/-, 1:1, image width/length, change background color, vector layers on/off.
Other View Functions	Overlay files. Compare files with automatic detection of differences. QuickViews. File object calibration and comprehensive measurement of distance, angle and area for any format.
Print Functions	Both document and drawing/image printing supported. Dynamic scalable print preview function with; print full area, selected area, scaled-to-fit, 1:1, selected scale and poster. Pen table supported for a number of CAD formats. Print to any Windows printer device.
System Requirements	Windows 9x, NT, 2000, XP, Pentium 166Mhz or higher, 32 MB RAM or more, 60 MB free disk space.

Contact your dealer or check the Rasterex web site at www.rasterex.com for further information.



Rasterex Software a.s.

P. O. Box 124 Sentrum – 0102 Oslo, Norway

Tel. +47 (22) 91 00 90

Fax +47 (22) 91 00 91

E-mail: sales@rasterex.com,

Internet: www.rasterex.com

Rasterex is represented in over 50 countries worldwide. To locate your nearest Rasterex office, distributor or dealer, visit our web site at

www.rasterex.com